

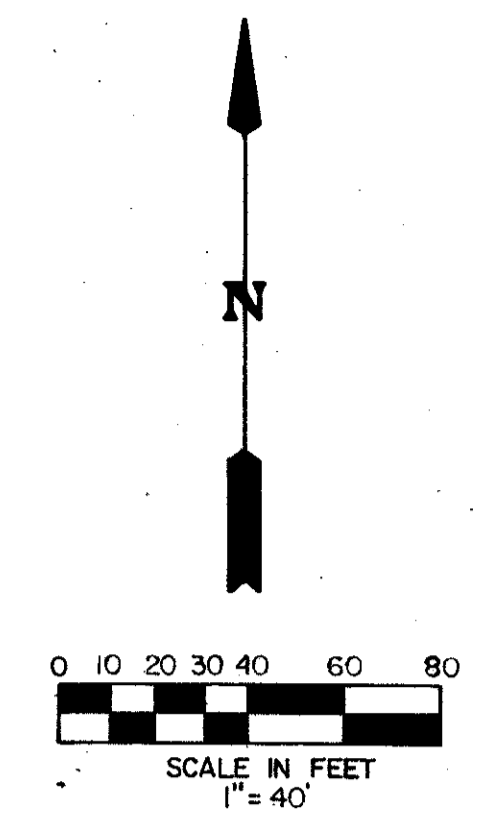
WYCLIFFE - PARCEL A

BEING PART OF WYCLIFFE GOLF AND COUNTRY CLUB, P.U.D.
 A REPLAT OF TRACT A OF "WYCLIFFE PLAT ONE" (P.B. 62, PGS. 8-13)
 SITUATE IN SECTION 25, TOWNSHIP 44 SOUTH, RANGE 41 EAST
 PALM BEACH COUNTY, FLORIDA

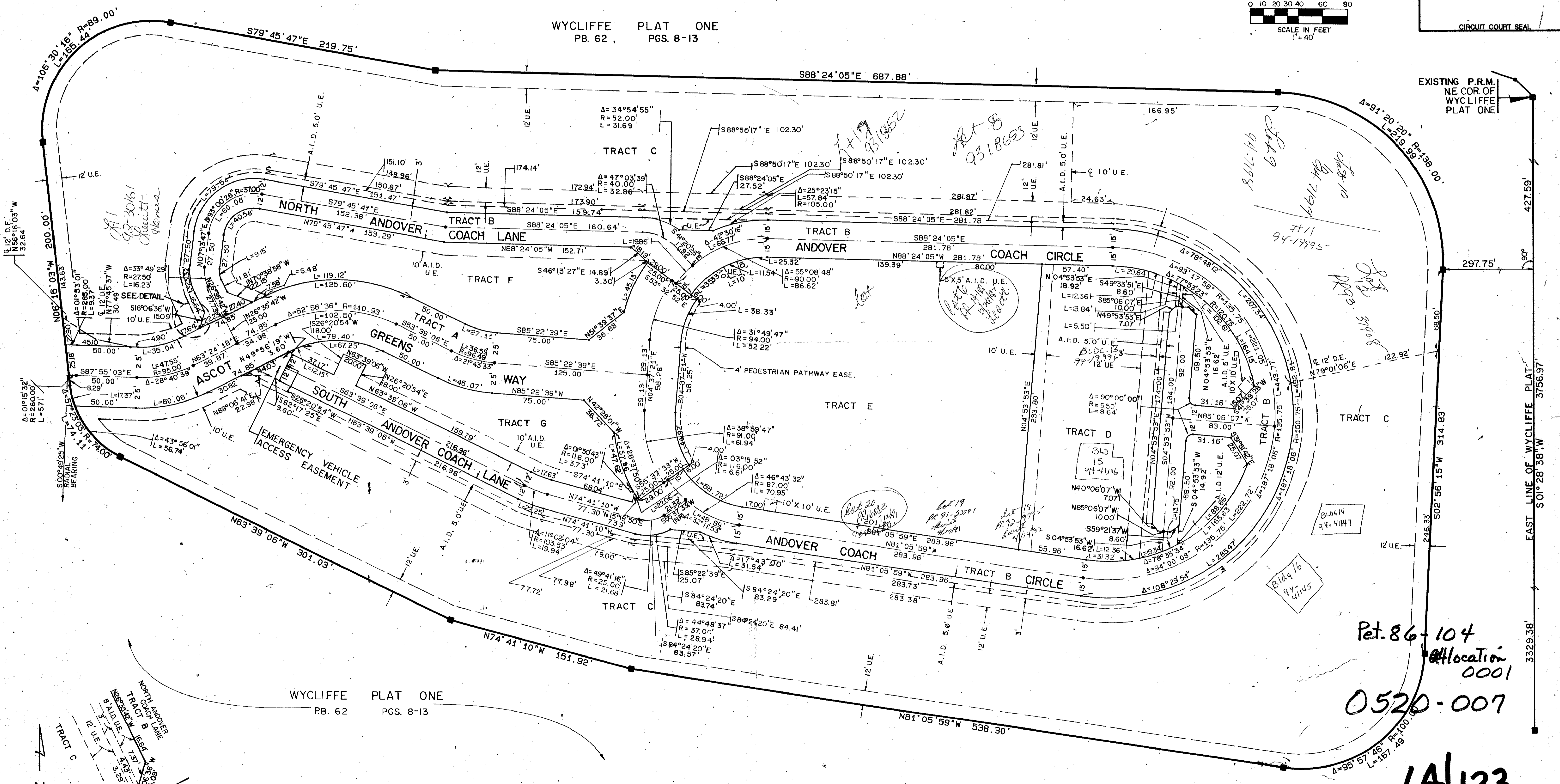
AUGUST 1989

SHEET 2 OF 2

WYCLIFFE PLAT ONE
PB. 62, PGS. 8-13



STATE OF FLORIDA
 COUNTY OF PALM BEACH
 THIS PLAT WAS FILED FOR
 RECORD _____ DAY OF _____
 AD, 1989 AND DULY RECORDED
 IN PLAT BOOK _____ ON PAGES
 _____ AND _____
 JOHN B. DUNKLE, CLERK
 BY: _____, D.C.
 CIRCUIT COURT SEAL

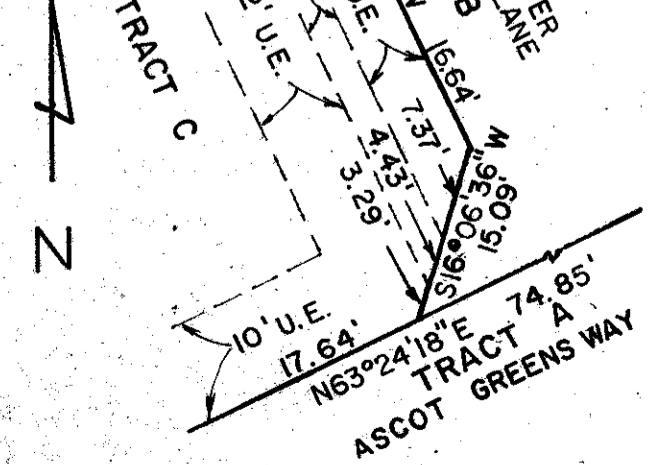


WYCLIFFE PLAT ONE
PB. 62 PGS. 8-13

Pet. 86-104
 Allocation
 0001
 0520-007

64/133

Subdivision: Wycliffe Parcel A
 Block: 64
 Flood Zone: B
 Quad: 63
 RT
 86-104
 TWP: 44 S
 R: 41 E
 Section: 25
 P.U.D.: Wycliffe Golf and Country Club P.U.D.



DETAIL
(n.t.s.)

STANLEY CONSULTANTS OF FLORIDA, INC.
 ENGINEERS & PLANNERS & SURVEYORS
 2000 LONGWOOD STREET, WEST PALM BEACH, FL 33407 (407) 842-7444

DRAWN	D.L.S.	DATE	JUNE 6, 1989
CHECKED	S.T.K.	SCALE	1"=40'
DRAWING NO.	D12	10092PL	

WYCLIFFE PARCEL A
 AT WYCLIFFE GOLF AND COUNTRY CLUB P.U.D.